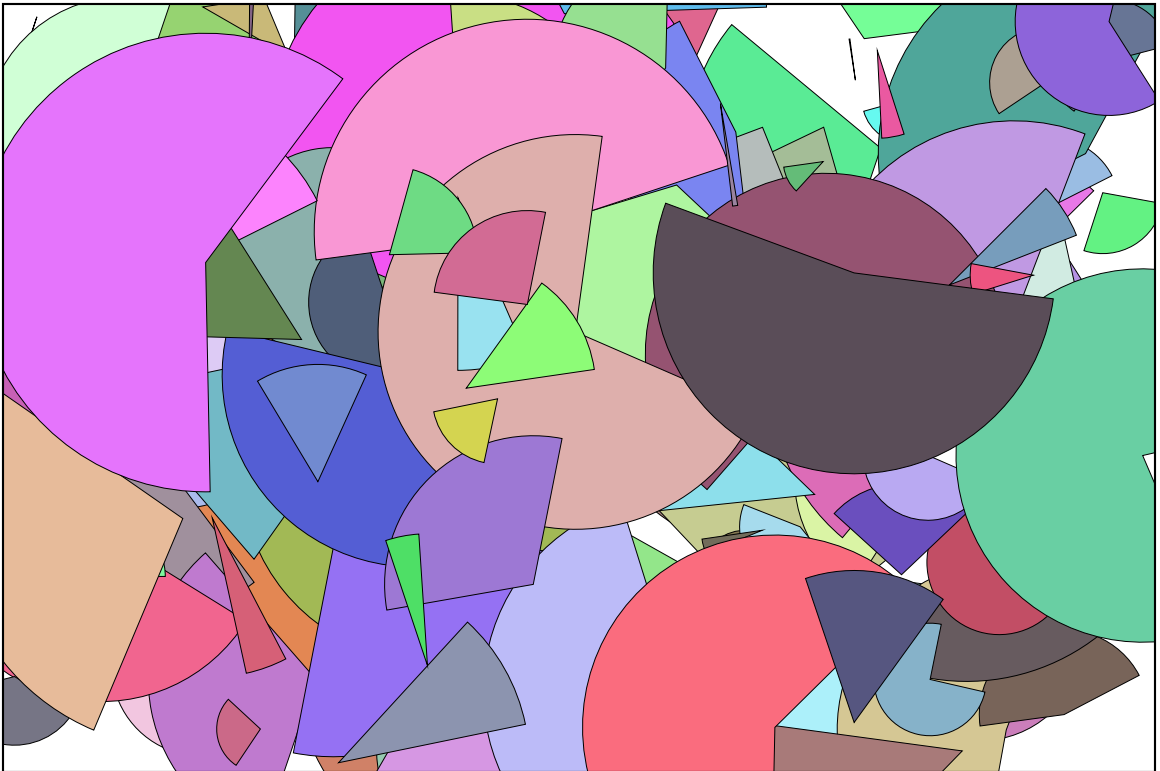


ClibPDF Reference Manual

ANSI C Library for Direct PDF Generation



FastIO Systems

<http://www.fastio.com/>

clibpdf@fastio.com



ClibPDF Library Reference Manual
Copyright (C) 1998 FastIO Systems, All Rights Reserved.

FastIO Systems
<http://www.fastio.com/>
clibpdf@fastio.com

This publication and the information herein are furnished AS IS. We at FastIO Systems have tried to make the information contained in this manual as accurate and reliable as possible. However, FastIO Systems disclaim any warranty of any kind, whether express or implied, as to any matter relating to this document, including the merchantability or fitness for any particular purpose. FastIO Systems will, from time to time, revise the software described in this manual and reserves the right to make such changes without the obligation to notify anyone. In no event, shall FastIO Systems be liable for any indirect, special, incidental, or consequential damages arising out of use of this manual or the information contained herein.

Restricted Rights Legend: Use, duplication, or disclosure by the Government is subject to restrictions as set forth in subparagraph (c)(1)(ii) of the Rights in Technical Data and Computer Software clause at DFARS 252.227-7013 (or, if applicable, similar clauses at FAR 52.227-19 or NASA FAR Supp. 52.227-86).

FastIO, and ClibPDF are trademarks of FastIO Systems.

PostScript, Acrobat, Adobe Illustrator, Distiller are trademarks of Adobe Systems Incorporated. Apple, Macintosh, and Mac are registered trademarks of Apple Computer, Inc. FrameMaker is a registered trademark of Frame Technology Corp. ITC Zapf Dingbats is a registered trademark of International Typeface Corp. Helvetica and Times are trademarks of Linotype-Hell AG and/or its subsidiaries. Windows is a trademark and Microsoft is a registered trademark of Microsoft Corp. NEXTSTEP, OPENSTEP, and NeXT are trademarks of NeXT Software, Inc. UNIX is a registered trademark of UNIX Systems Laboratories. All other brand or product names are the trademarks or registered trademarks of their respective holder.

All figures including the cover of this manual have been generated entirely by programs that make use of the ClibPDF library. No drawing or illustration program has been used to create included figures. In some cases, the figure PDF files have been converted into the EPS format using Tailor by FirstClass NV for importing them into FrameMaker. This manual has been set by using FrameMaker.

Version 1.0, October 1998.